



To support health and safety of Prefectural citizens

The Yamagata Prefectural Institute of Public Health

TEL 81-236-27-1358

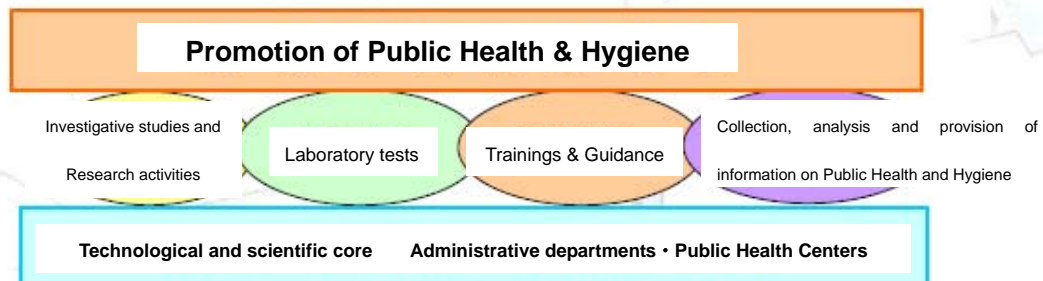
Fax 81-236-41-7486

E-mail eiken@pref.yamagata.jp

URL [http:// www.eiken.yamagata.yamagata.jp](http://www.eiken.yamagata.yamagata.jp)

● Roles of Prefectural Institute of Public Health

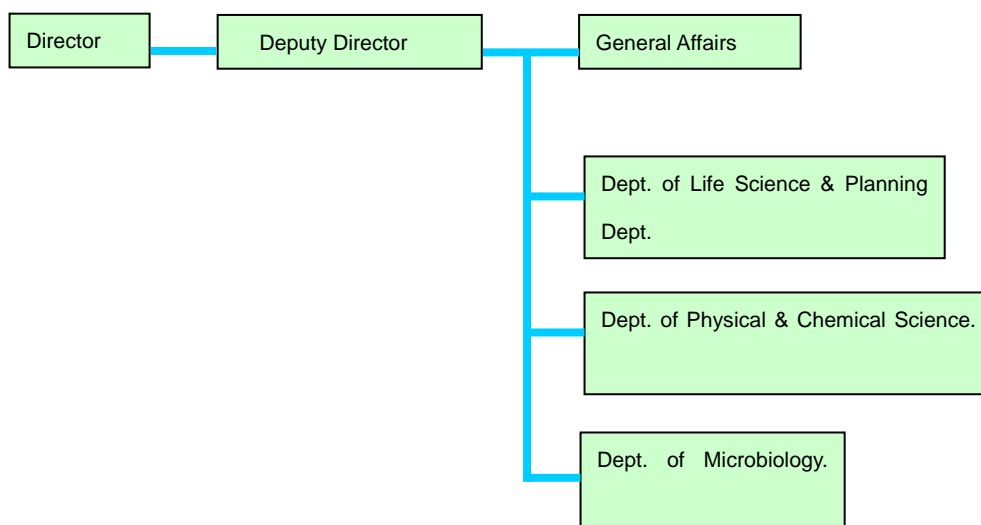
Prefectural Institute of Public Health, as a technological and scientific core of the prefecture, conducts **investigative and research activities, laboratory tests, trainings and guidance, as well as collection, analysis and provision of epidemiological information** in close cooperation with health authorities and public health centers in order to facilitate community health programs effectively and to enhance and improve the public health of the region.



● Activities of Yamagata Prefectural Institute of Public Health

- Physical and chemical tests on pharmaceuticals and other chemicals
- Tests on food and additives • Tests for environmental hygiene • Pathological examinations
- Isolation and Identification of pathogens and serological examinations
- Analysis on the quality of hot springs
- Epidemiological information collection and analysis
- Investigative research activities necessary for the public health
- Guidance on the management of laboratory facility of public health centers and other hygiene related facilities
- Training for health professionals and researchers

● Organization



Dept. of Life Science & Planning

Conduct neonatal screening tests for congenital inborn errors of metabolism, examinations on pollinosis, investigative and research activities and information collection as well as information provision for the prevention of allergic diseases.

☆ Neonatal screening tests for congenital inborn errors of metabolism

Conduct screening tests for newborn babies in the prefecture with the aim to detect congenital inborn errors of metabolism at an early stage and to prevent ensuing physical and mental impairment. In addition, conduct a follow-up program in cooperation with institutions concerned, and conduct a program evaluation.



When cedar pollen enters in a nasal cavity it ruptures (the pollen was stained in red with fuchsin) and allergic substances come out.

☆ Investigative and Research works for the prevention of Allergy

Measure the level of allergens (pollens, ticks and molds) in the environment and monitor seasonal fluctuations.

Develop a highly-sensitive method for environmental allergens.



Library and information

☆ Collection and provision of information

Collect and provide informations necessary for research activities and laboratory tests at the Institute of Public Health and Public Health Centers.

Publish bulletins and newsletters.



☆ Infectious Disease Surveillance Center

Collect and analyze pathogen information of infectious diseases such as bacteria and viruses from all over the prefecture. Collected epidemiological data are announced officially through a website, and send weekly reports and monthly reports to medical institutions, municipal governments and schools for use.



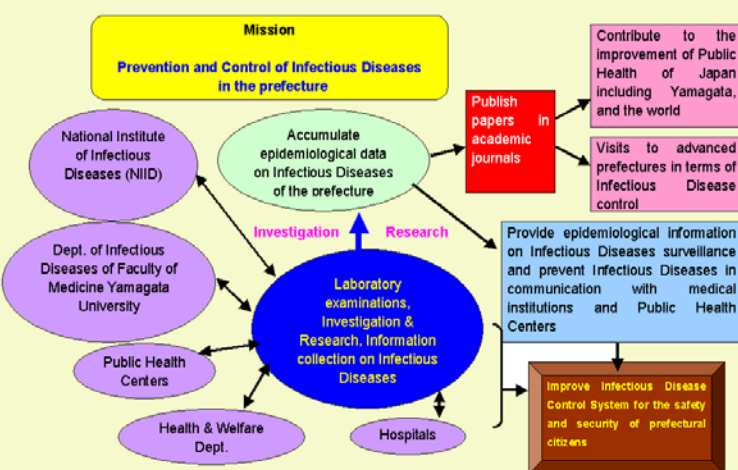
Dept. of Microbiology We conduct microbiological examinations to prevent infectious diseases and to secure safety of food, and conduct epidemiological surveys on microorganisms.

☆ Infection Control of the prefecture

In cooperation with the Central Government, universities, Public Health Centers, the prefectural government and medical institutions, we accumulate epidemiological data of infectious diseases within the prefecture. We publish the data through website and presentations to academies to strengthen infection control strategies.



Activity flow of Department of Microbiology of the YAMAGATA Prefectural Institute of Public Health



☆ Microbiological Examinations

We isolate and characterize pathogens in accordance with the National Epidemiological Surveillance of Infectious Diseases. We conduct laboratory examinations to identify causal agents of outbreaks and food poisonings, and epidemiological surveys, if necessary.

In addition, we survey the seropositivity to vaccine-preventable diseases such as influenza, measles and rubella.

Dept. of Physical & Chemical Science

Conduct examinations on pesticides, pharmaceuticals and hot spring waters as well as research activities on foods and local products that would promote and maintain the health of people.



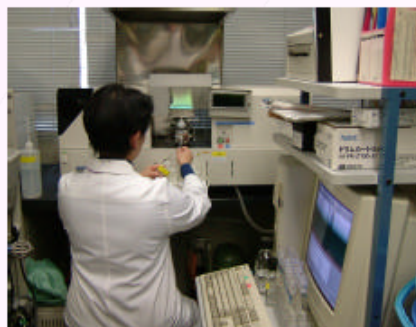
☆ Measurement of residual pesticides in agricultural products

Measure the level of residual pesticides of agricultural products circulated in the market in order to secure safety of agricultural products. The photo illustrates an extraction and refining process of a target component in the sample before using a gas chromatography for analysis.

☆ Analysis of ingredients in hot spring water

Upon request by the owner of a hot spring, examine the quality of hot spring waters and water sources.

The photo illustrates a heavy metal analysis by an atomic absorption photometer.



☆ Survey of the environmental radioactive levels

Commissioned by the national government, measure the ordinary environmental radioactive levels. The photo is a germanium semiconductor nuclide analyzer to identify various radioactive substances.

☆ Study of bioactive substances from wild plants

Explore bioactive substances good for health in local wild plants of YAMAGATA such as mushrooms and wild plants.

Improve assay techniques to detect poisonous substances in aconite, mushrooms and others.



☆ Pamphlets

"CAUTION – POISONOUS Mushrooms and Wild plants"

"Herbal medicines familiar with you"

"Surprising part of food"

